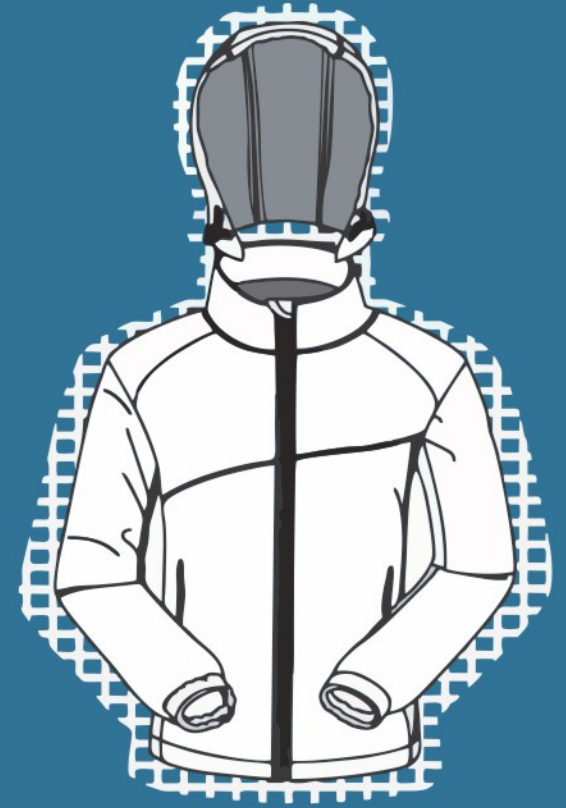




# Top Fortune



Shanghai Top Fortune Industry Co.,Ltd.

Add:Floor 3,Building 3,No 58 East Wenxiang Rd,

Songjiang,Shanghai,China

Tel:86-21-37662100

Fax:86-21-57876197

E-mail:enquiry@topfortuneco.com

[www.customapparelsh.com](http://www.customapparelsh.com)

2020.Aug.

## Why choose us?

1. 18 years international experience.
2. Ship to more than 40 countries.
3. Sales team average 11 years working experience.
4. Reply all enquiry within 2 hours.
5. One stop service from design to shipment.
6. Quick & Flexible sample and production time within 30-45days.
7. Complete Supply Chain Control System, from yarn dye to finished products,
8. Annual Sales: USD\$5,000,000.00 in 2019.
9. Aggressive and Team work culture.

## Company culture

1. Be independent & Manage by yourself.
2. Always a solution, for any problem.
3. Team work & Help each other.
4. Be passion and enjoy work.
5. Release the pressure.
6. Always fighting.
7. Real-time communication .
8. Keep exploring & Hug the change.



## Softshell



SSJ1810

Softshell jacket

Fabric:

20D knitted fabric +membrane  
+micro polar fleece, 240gsm

Feature:

Slim fit

Waterproof and breathable  
Outdoor wear



JK1919

Jacket

Fabric: 310T 100% nylon, 290T  
100% polyester lining,  
100% polyester padding 80gsm.

Feature:

YKK zippers

Rib cuff ,collar and bottom



## Jacket



**RJ1901**  
 Rain jacket  
 Shell:300T polyester pongee +TPU film .  
 Lining :polyester mesh .  
 description :waterproof  
 W/P :10000mm,  
 breathable MVP:1000  
 waterproof zipper ,full tape seam .  
 light weight ;riser vent underarm  
 elastic cuff .



**SSJ148**  
 Softshell jacket  
 Fabric: 335gsm, 3layer bonded fabric, 75D 95% polyester 5% spandex + membrane Film + 96D/144F Micro fleece on back.  
 Waterproof and Breathable  
 Feature: -Mobile phone chest pocket with zip, additional pocket on sleeve with welded zip, detachable hood with zip,shaped sleeves, adjustable anti-tangle drawstring , adjustable, elasticated and wind resistant cuffs with velcro and hole for thumb,shaped hem.



## Softshell



**SSJ1801**  
 softshell jacket  
 Fabric: 340gsm 3 layers bonded fabric with lamination, 4 ways spandex 96% polyester 4% spandex+TPU membrane+100% polyester polar fleece  
 waterproof W/P 8000mm  
 breathable MVP 1000mg/m2/24h  
 Hood: 228 nylon Taslon, hidden with velcro



**SSJ181**  
 Softshell jacket  
 Fabric:  
 310gsm,3 layer bonded fabric , 75D 95% Polyester 5% Spandex +membrane film+96D/144F micro fleece on back.  
 Feature:  
 Waterproof and breathable. Detachable sleeve.Mesh body lining. Adjustable Cuff,wind resistant elasticated rib insert cuff



## Softshell



SSJ1910

Fabric: 280GSM two layer bonded fabric, 75D 94% polyester 6% Spandex+90D/144F micro fleece

Feature:

water resistant  
Adjustable cuff  
two side zipper pockets with fluorescence piping



1608  
Softshell Jacket

Fabric : 290gsm 2 layer bonded fabric ,4 ways Spandex 96% polyester 4% Spandex+100% polyester polar fleece; Velcro tape on cuff ; chest with name plate ; 2 zipper pocket with customized brand zipper pull .



3503  
Softshell Jacket

Fabric: 330GSM 3 layers bonded fabric with lamination, 4 ways Spandex 96% polyester 4% Spandex+TPU membrane+100% polyester polar fleece:  
waterproof W/P 8000mm  
breathable MVP 3000mg/m2/24H  
Detachable sleeve  
one zipper chest on right chest  
adjustable cuff and hemd



1607  
Softshell Jacket

Fabric: 335gsm, 3layer bonded fabric, 75D 95% polyester 5% spandex+TPU Film+96D/144F Micro fleece on back, Waterproof W/P 8000 mm, Breathable MVP 1000mg/m2/24h.  
- Features: 2x side pockets  
reversible zip ,Adjust toggle on hem ,zip off hood .



## Padding jacket



1610  
Jacket

Fabric:420D Oxford with PU coating +150gsm polyester padding +210T taffeta .  
Multi-pocket;full tape seam sealed ;W/P 5000mm,MVP 1000mg;2 zipper head on top and bottom;hood can be hidden on collar ;



3504  
Jacket

Shell:300T 100% polyester oxford with coating  
Padding:200GSM 100% polyester  
Lining:210T 100% polyester  
Jacket with taped seam for waterproof  
EN ISO 20471:2013+A1:2013 Class 2  
EN 343:2003+A1:2007/AC:2009  
Detachable hood  
one front chest pocket on the right chest with waterproof zipper  
3 internal pockets  
adjustable cuff and hem



3505  
Rain jacket

Fabric : Shell 300T 100% recycled polyester Padding: 60GSM 100% recycled polyester Lining: 100% recycled polyester with digital printing  
waterproof:8000 breathable 1000  
Jacket with taped seam for waterproof  
waterproof zipper for all pocket  
Detachable hood  
one chest pocket inside of the left chest elastic cuff



FP19092  
Winter jacket

Shell Fabric:100% polyester with coating  
Contrast:320gsm 100% polyester coarse knitted fabric,  
Gusset:100% polyester bonded fabric  
Feature:  
Lastest design



## Padding jacket



JK1754  
Padding Jacket

Fabric:  
20D Knitted bonded fleece with  
TPU membrane film 100%  
polyester taffeta rib-stop  
180gsm 100% polyester padding  
Feature:  
latest design



PJ1755  
Padded Jacket

Fabric:  
100% polyester taffeta+ 110gsm  
polyester padding +210T taffeta  
Feature: economic cost;  
classic design



DJ1911  
Goose Down jacket

Shell:100% polyeste water  
resistant  
Padding:180grams 90% goose  
down 10% goose feather,  
Lining: 100% polyester  
Detachable Hood with zipper ,  
Velcro cuff ,YKK zippe, Long  
style, two outside zipper pockets,  
two inside zipper pockets



PJ1920  
Reversible Puffer Jacket

Material : 20D nylon ,lightly  
water repellant ,  
Pilling , 200gsm polyester  
pilling for two side  
With EMB logo on chest and  
back , SBS zipper with client's  
logo zipper puller , client's  
pantone colour body fabric  
Reversible

# Windbreaker



3508  
Rain jacket

Material: 100% Nylon rib stop  
+100% polyester mesh lining  
waterproof 8000 breathable 3000  
Jacket with taped seam for  
waterproof  
hood can be hidden into the collar  
adjustable hem and cuff



5745  
Thinsulate Warm & Waterproof  
jacket

Shell fabric : 300T polyester  
pongee +TPU film ;body lining :  
3M Thinsulate bonded fleece,  
120gsm ;sleeves lining :  
Thinsulate bonded taffeta ;  
elastic cuff ,hidden hood on  
collar ;waterproof zipper ;  
full tape seam ;riser vent  
underarm;waterproof W/P  
10000mm;breathable MVP 1000.



JK1915  
Windbreaker jacket

Fabric: 100% polyester  
ripstop +PU coating,  
waterproof 5000MM  
100% polyester mesh lining  
Feature:  
Foldable hood  
Reflective tape  
All seam taped



1618  
Jacket

Shell fabric : 100% polyester  
pongee +TPU membrane ;  
Lining : 60gsm polyester mesh ;  
Velcro tape on cuff ;full  
tape same sealed ;hidden  
hood on collar ;W/P: 10000mm,  
MVP 1000mg



## Fleece jacket



1611  
Sweatshirt

Material:300gsm 100% polyester fleece ;rib cuff and rib hem ;stand collar ,pullover style with 1/3 zipper;reflective zipper on front and pocket .

Hi-Vis style



3506  
Pullover

Material:280GSM 50% cotton 50% polyester,brushed inside elastic rib cuff and hem



1612  
Hoodie

Material:300gsm 100% polyester fleece ;rib cuff and rib hem ;reflective zipper on front and pocket .2 zipper pockets.

Hi-Vis style



3507  
Fleece jacket

Material:280GSM 100% polyester polar fleece Anti-Pill raglan sleeve with 2 side zipper pocket elastic cuff





## Fleece jacket



1613  
Fleece jacket

Main fabric :3 layers bonded fabric ,330gsm,polar fleece +TPU membrane +polar fleece ;  
Shoulder fabric :ripstop;total 4 pockets on chest/sleeves /hem ;  
elastic cuff and hem .  
Waterproof



1614  
Fleece jacket

Fabric :  
220gsm ,100% polyester micro fleece ;detachable sleeves by zipper ;contrast colour on side ;name plate on chest ;light weight ;  
mobile pocket on chest .



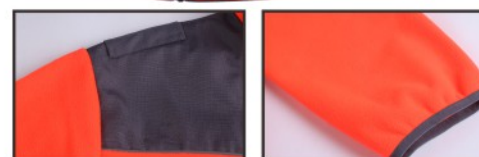
1615  
Fleece jacket

Material:orange fabric :300D Oxford with PU coating ;main fabric :400gsm,3 layer bonded fabric ,printed fleece +TPU +polar fleece ;2 chest pockets closed by Velcro ;2 sides pockets with zipper ;sleeves tap to adjust size ;split hem .  
waterproof .



FJ1913  
High visibility fleece jacket

Fabric:  
3layers bonded fabric layers High visibility orange fleece bonded fleece with TPU film,330gsm  
100% polyester Oxford  
Feature:  
SBS zippers with pullers  
Spandex cuff and bottom



## Fleece jacket



FJ14-02  
BP fleece jacket

Fabric:  
Men :280gsm 100% polyester  
polar fleece 96D/144F;  
Ladies:210gsm 100% polyester  
polar fleece 96D/144F;



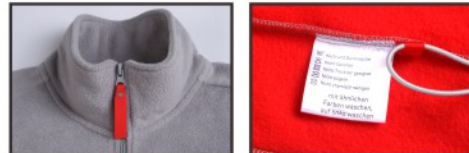
FJ1621  
Light weight fleece jacket

Fabric:  
180gsm 100% micro polar  
fleece  
Feature:  
2 side zipper pocket,  
elastic cuff



Fj1914  
Fleece jacket

Fabric:  
100% polyester  
micro fleece 280gsm  
Feature:  
Detachable sleeve by zipper  
Reflective piping  
Big embroidery patch on back



FJR01  
High visibility fleece jacket  
for safety work wear

Fabric:  
300g anti-pill 100% polyester  
polar fleece.  
5cm Reflective tape.



# Fleece jacket



FJ1608  
Polar Fleece Jacket

Fabric:  
280gsm polar fleece 96D 144F  
Feature:  
Economic cost;  
Classic design



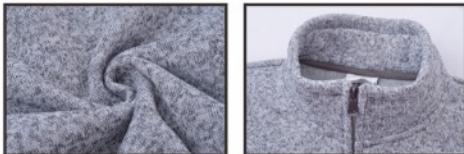
FJ1214  
Knitted jacket

Fabric:  
280gsm 100% polyester  
coarse knitted fabric



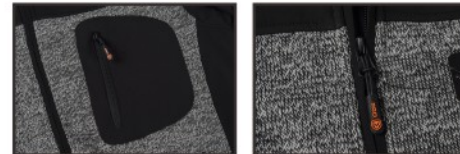
FJ14-08  
Gauge knitted fleece jacket

Fabric:  
280gsm 100% polyester  
needle fleece fabric



FJ1812  
Gauge knitted melange  
bonded jacket

Shell:  
Gauge knitted melange  
bonded micro fleece ,400gsm.  
Contrast :  
96% polyester 4%  
spandex bonded micro fleece



# Fleece jacket



FGJ1916  
Gauge fleece jacket

Fabric:280GSM 100% polyester gauge fleece  
panel:280GSM 60% cotton 40% polyester  
Feature  
one chest zipper pocket  
two side zipper pockets  
Elastic hem and cuff  
Slim fit



FJ1816  
Knitted jacket

Fabric :  
320gsm 100% polyester gauge fleece  
customized color available  
Feature:  
Elastic hem and cuff  
slim fit



HD16016  
Team hoodie

Main fabric :300gsm 80% cotton 20% polyester .  
Applique embroidery logo ;  
printing care label in neck .  
Rib cuff and hem



HD1762  
Hoodie

Fabric:  
280gsm 100% polyester sublimation  
Feature:  
full color printing



# Polo



3501  
Anti-static polo

Material:  
180GSM 100%  
polyester jersey  
conductive fibre for antistatic



3502  
Polo shirt

Material:  
180GSM 50% cotton,  
50% polyester pique  
raglan sleeve and contrast color  
design  
with one front heat transfer  
printing logo on front and back  
side  
one small heat transfer printing  
logo on two sleeves



1601  
Polo shirt

Fabric :  
170gsm 100%  
polyester mesh ;Black and Hi  
vis orange colour ;rib collar  
and cuff ;Invisible pocket on  
chest ;raglan sleeve with  
reflective piping on armhole.  
• Complies with AS/NZS4399  
• Complies with AS/NZS4602.1  
- Class D  
• Complies with AS/NZS1906.4  
- Class F  
UPF 50+



Ps1962  
Polo shirt

Fabric:  
160gsm 100% polyester mesh.  
Feature:  
self fabric collar, heat transfer  
print LOGO.



# Polo



PS1816  
Shell polo

Fabric 155gsm 100% polyester mesh  
 Description: heat seal reflective tape all over sublimation printing anti-pilling grade 4  
 Snagging Resistance grade 4  
 anti-microbial 99.9%, 30 times washing moisture wicking color fastness 4 grade



PS1623  
POLO

Fabric:  
 160 gsm 100% polyester mesh sublimation printing;  
 Feature:  
 Moisture wicking;  
 Anti-microbico  
 anti-pilling, snagging resistance



PS1910  
Polo shirt

Fabric:  
 160gsm polyester mesh 5cm reflective tape high visibility rib collar



PS1761  
POLO

Fabric:  
 155gsm 100% polyester mesh  
 Feature:  
 Anti-microbial  
 anti-pilling, snagging resistance  
 moisture wicking  
 sublimation



# Polo



PS14-05  
Mens Polo shirt  
Ladies Polo shirt

Fabric:  
180gsm 55% cotton 45% polyester,  
polyester on face, cotton inside.  
Feature:  
Quick dry, Anti-microbial  
finish-Chemical additives.



1205  
Polo shirt

Fabric:  
100% Polyester Pique  
Dri Fit 150gsm  
2 Button Placket, side seams  
with drop split tail, short sleeved.



PS1805  
Polo shirt

Fabric:  
160gsm 65% cotton 35%  
polyester  
Feature:  
all over machine screen print  
self fabric collar



PS1916  
Polo shirt

Fabric:  
170gsm polyester pique  
Feature: Rib cuff  
embroidery Logo



# T shirt



TS1602  
T Shirt

Fabric:  
130gsm 65%polyester  
35% cotton  
Feature: Reactive dye;  
Reliable dye fastness;  
No side cutting



1201  
T shirt

Fabric :  
170GSM 92.2%cotton  
7.8%spandex  
Function: stain-resistant,oil  
resistant and water resistant.



TS1919  
T shirt

Fabric:  
140gsm 100% polyester mesh  
Feature:  
Popular colors



1603  
T shirt

Fabric :  
180gsm 100%  
polyester polar fleece ;  
Invisible pocket on chest ;  
contrast collar colour .



# T shirt



TS1912

Fabric :  
 170gsm 100% polyester  
 mesh ,High visibility orange ;  
 Moisture wicking .  
 AS/NZ4602.1:2011 Class D  
 Daytime use  
 AS/NZ 1906.4 : 2010 Class  
 F Daytime fluorescent  
 AS/NZ 4399 UV protection  
 factor 50+



1602  
 Polo shirt

Fabric :  
 170gsm 100% polyester mesh ;  
 Black and Hi vis orange colour :  
 chest pocket . • Complies with  
 AS/NZS4399  
 • Complies with AS/NZS4602.1  
 - Class D  
 • Complies with AS/NZS1906.4  
 - Class F



TS1868 T shirt

Fabric:  
 140gsm 100% combed  
 cotton,preshrunk.  
 Feature:  
 screen print



VS1626  
 Padded Vest

Fabric:  
 Main fabric 100% nylon ,  
 200gsm padding ,  
 lining 100% nylon  
 Feature:  
 Popular design;  
 Inventory color to choose,  
 small MOQ available



# Vest



1604  
Bodywarmer

Fabric :300T polyester pongee  
+80gsm polyester padding  
+210T taffeta ;rubber zipper  
pull ;heat transfer print LOGO;  
2 side pockets with zipper .  
water resistant



1609  
Softshell vest

Fabric: 335gsm, 3layer  
bonded fabric, 75D 95%  
polyester 5% spandex+TPU  
Film+96D/144F Micro fleece  
on back,Waterproof W/P  
8000 mm,Breathable MVP  
1000mg/m2/24h. - Features:  
2x side pockets reversible zip ,  
Adjust toggle on hem ,zip off  
hood .



1605  
Work Vest

Shell Fabric:  
235gsm 65%  
cotton 35% polyester twill;  
Lining :65gsm polyester mesh ;  
4 pockets with press buttons;  
contrast color on side seam .  
Curved hem .



VS1401  
Anti-static Padded vest

Fabric:  
100% polyester Peach  
with anti-static;  
100% polyester padding ;  
100% polyester lining.  
Contrast color zip and color



# Shirt



1606  
Shirt

Fabric:  
129gsm plaid woven fabric;  
55% cotton 45% polyester  
chest pocket;  
embroidery logo;  
Curved hem, classic design



FJ1509  
Polar Fleece Shirt

Fabric:  
160gsm 100% polyester  
polar fleece



PS1760  
Dress Shirt

Fabric:  
150GSM 65% cotton  
35%polyester,twill, Wrinkle-  
Free  
Feature:  
easy care



SH1766  
Shirt

Fabric:  
105gsm 60% cotton 40%  
polyester poplin  
Feature:  
wrinkle resistant  
soil release





1619  
Shirt

Material: 100% polyester  
110gsm, melange color.

Classic design



## Pant



1203  
Chef Pant

Material: 98% polyester 2%  
spandex or 65%polyester  
35%cotton ,checked.

Preshrunk  
Classic color



## Chef



1204  
Chef coat

Material : 65% polyester 35%  
cotton, 200gsm fine line twill  
fabric blend.

Double-breasted closure  
Preshrunk  
Classic color



PT1701  
Uniform

Fabric:  
240gsm twill 65% polyester  
35% cotton

Feature:  
school uniform

